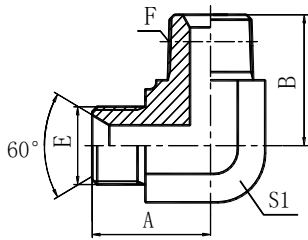


1BT9-SP

BSP MALE 60° SEAT / BSPT MALE 90° ELBOW

PART NO.	THREAD		DIMENSIONS					
	E	F	A	B	S1			
1BT9-02SPZ	G1/8"X28	R1/8"X28	20	21	11			
1BT9-02-04SPZ	G1/8"X28	R1/4"X19	22.3	25.5	14			
1BT9-04SPZ	G1/4"X19	R1/4"X19	24.5	25.5	14			
1BT9-04-02SPZ	G1/4"X19	R1/8"X28	25	23.5	14			
1BT9-04-06SPZ	G1/4"X19	R3/8"X19	25	28.5	16			
1BT9-04-08SPZ	G1/4"X19	R1/2"X14	30	36	22			
1BT9-06SPZ	G3/8"X19	R3/8"X19	27.5	28.5	16			
1BT9-06-04SPZ	G3/8"X19	R1/4"X19	27.5	26.5	16			
1BT9-06-08SPZ	G3/8"X19	R1/2"X14	31	36	22			
1BT9-08SPZ	G1/2"X14	R1/2"X14	34.5	36	22			
1BT9-08-04SPZ	G1/2"X14	R1/4"X19	34	30.5	22			
1BT9-08-06SPZ	G1/2"X14	R3/8"X19	34.5	32.5	22			
1BT9-08-12SPZ	G1/2"X14	R3/4"X14	37.5	43.5	27			
1BT9-08-16SPZ	G1/2"X14	R1"X11	41	50	33			
1BT9-10-08SPZ	G5/8"X14	R1/2"X14	35	36	22			
1BT9-10-12SPZ	G5/8"X14	R3/4"X14	39	43.5	27			
1BT9-12SPZ	G3/4"X14	R3/4"X14	40	43.5	27			
1BT9-12-06SPZ	G3/4"X14	R3/8"X19	40	36	27			
1BT9-12-08SPZ	G3/4"X14	R1/2"X14	40	39.5	27			
1BT9-12-16SPZ	G3/4"X14	R1"X11	43.5	50	33			
1BT9-12-20SPZ	G3/4"X14	R1.1/4"X11	48	56.5	41			
1BT9-16SPZ	G1"X11	R1"X11	46	50	33			
1BT9-16-08SPZ	G1"X11	R1/2"X14	46	43	33			
1BT9-16-12SPZ	G1"X11	R3/4"X14	46	47.5	33			
1BT9-16-20SPZ	G1"X11	R1.1/4"X11	50.5	56.5	41			
1BT9-20SPZ	G1.1/4"X11	R1.1/4"X11	52	59	41			
1BT9-20-12SPZ	G1.1/4"X11	R3/4"X14	50.5	54	41			
1BT9-20-16SPZ	G1.1/4"X11	R1"X11	52	56.5	41			
1BT9-20-24SPZ	G1.1/4"X11	R1.1/2"X11	54.5	62.5	48			
1BT9-24SPZ	G1.1/2"X11	R1.1/2"X11	57.5	62	48			
1BT9-24-20SPZ	G1.1/2"X11	R1.1/4"X11	57.5	61	48			
1BT9-24-32SPZ	G1.1/2"X11	R2"X11	66	75	63			
1BT9-32SPZ	G2"X11	R2"X11	67	75	63			
1BT9-32-24SPZ	G2"X11	R1.1/2"X11	68	72	63			

1. Material options for connector.



1BT9-SP

BSP MALE 60° SEAT / BSPT MALE 90° ELBOW

PART NO.	THREAD		DIMENSIONS				
	E	F	A	B	S1		
Connector material		Part. No. suffix		Part No. example			
Carbon steel (Default)		Z		1BT9-08SPZ			
304 stainless steel		SR		1BT9-08SPSR			
316L stainless steel		SV		1BT9-08SPSV			
316Ti stainless steel		SY		1BT9-08SPSY			

2. Plating options and performance for carbon steel connectors.

Plating method	Part. No. suffix	Part No. example	White rust (Hours)	Red rust(Hours)
Cr3+ plating (Default)	Z	1BT9-08SPZ	96	360
Durakote plating	ZD	1BT9-08SPZD	360	720
Zinc-nickel plating	ZN	1BT9-08SPZN	1000	-