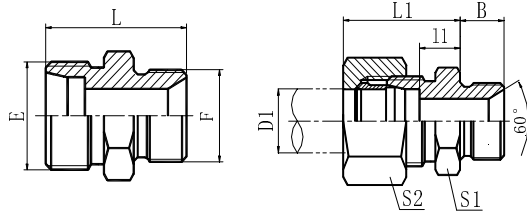


# ADAPTER

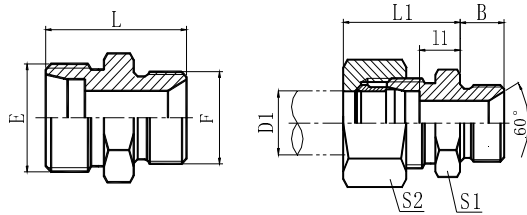


**1CB**  
**1DB**

**1CB-RNW**  
**1DB-RNW**

METRIC MALE 24° CONE / BSP 60° CONE SEAL

PART NO.		THREAD		D1		DIMENSIONS				
BODY	ASSEMBLY	E	F	TUBE O.D.	B	l1	L1	L	S1	S2
L SERIES										
1CB-12-02Z	1CB-12-02RNWZ	M12X1.5	G1/8"X28	6	10	8	23	24	14	14
1CB-12-04Z	1CB-12-04RNWZ	M12X1.5	G1/4"X19	6	12	9	24	28	19	14
1CB-14-02Z	1CB-14-02RNWZ	M14X1.5	G1/8"X28	8	10	8	23	25	14	17
1CB-14-04Z	1CB-14-04RNWZ	M14X1.5	G1/4"X19	8	12	9	25	28	19	17
1CB-14-06Z	1CB-14-06RNWZ	M14X1.5	G3/8"X19	8	13.5	9	24	28.5	22	17
1CB-16-04Z	1CB-16-04RNWZ	M16X1.5	G1/4"X19	10	12	10	25	28	19	19
1CB-16-06Z	1CB-16-06RNWZ	M16X1.5	G3/8"X19	10	13.5	12.5	25	33	22	19
1CB-16-08Z	1CB-16-08RNWZ	M16X1.5	G1/2"X14	10	16	11	26	32	27	19
1CB-18-04Z	1CB-18-04RNWZ	M18X1.5	G1/4"X19	12	12	10	25	29	19	22
1CB-18-06Z	1CB-18-06RNWZ	M18X1.5	G3/8"X19	12	13.5	10	25	30.5	22	22
1CB-18-08Z	1CB-18-08RNWZ	M18X1.5	G1/2"X14	12	16	11	26	33	27	22
1CB-18-12Z	1CB-18-12RNWZ	M18X1.5	G3/4"X14	12	18.5	11	26	36.5	32	22
1CB-22-06Z	1CB-22-06RNWZ	M22X1.5	G3/8"X19	15	13.5	11	26	31.5	24	27
1CB-22-08Z	1CB-22-08RNWZ	M22X1.5	G1/2"X14	15	16	12	27	34	27	27
1CB-26-08Z	1CB-26-08RNWZ	M26X1.5	G1/2"X14	18	16	11.5	28	35	27	32
1CB-26-12Z	1CB-26-12RNWZ	M26X1.5	G3/4"X14	18	18.5	11.5	28	35.5	32	32
1CB-30-12Z	1CB-30-12RNWZ	M30X2	G3/4"X14	22	18.5	13.5	30	39.5	32	36
1CB-36-16Z	1CB-36-16RNWZ	M36X2	G1"X11	28	20.5	14.5	31	42.5	41	41
1CB-45-20Z	1CB-45-20RNWZ	M45X2	G1.1/4"X11	35	20.5	15.5	37	45.5	50	50
1CB-52-24Z	1CB-52-24RNWZ	M52X2	G1.1/2"X11	42	23	16	39	50	55	60
S SERIES										
1DB-14-04Z	1DB-14-04RNWZ	M14X1.5	G1/4"X19	6	12	13	28	30	19	17
1DB-16-04Z	1DB-16-04RNWZ	M16X1.5	G1/4"X19	8	12	13	28	32	19	19
1DB-16-06Z	1DB-16-06RNWZ	M16X1.5	G3/8"X19	8	13.5	15	32	35.5	22	19
1DB-18-04Z	1DB-18-04RNWZ	M18X1.5	G1/4"X19	10	12	12.5	29	32	19	22
1DB-18-06Z	1DB-18-06RNWZ	M18X1.5	G3/8"X19	10	13.5	14.5	31	33.5	22	22
1DB-18-08Z	1DB-18-08RNWZ	M18X1.5	G1/2"X14	10	16	14.5	31	36	27	22
1DB-20-04Z	1DB-20-04RNWZ	M20X1.5	G1/4"X19	12	12	14.5	31	34	22	24
1DB-20-06Z	1DB-20-06RNWZ	M20X1.5	G3/8"X19	12	13.5	14.5	31	35.5	22	24
1DB-20-08Z	1DB-20-08RNWZ	M20X1.5	G1/2"X14	12	16	14.5	31	38	27	24
1DB-22-08Z	1DB-22-08RNWZ	M22X1.5	G1/2"X14	14	16	16	34	40	27	27
1DB-24-06Z	1DB-24-06RNWZ	M24X1.5	G3/8"X19	16	13.5	15.5	34	37.5	27	30
1DB-24-08Z	1DB-24-08RNWZ	M24X1.5	G1/2"X14	16	16	15.5	34	40	27	30
1DB-24-12Z	1DB-24-12RNWZ	M24X1.5	G3/4"X14	16	18.5	17.5	36	44.5	32	30
1DB-30-12Z	1DB-30-12RNWZ	M30X2	G3/4"X14	20	18.5	17.5	39	48.5	32	36
1DB-36-08Z	1DB-36-08RNWZ	M36X2	G1/2"X14	25	16	19	43	48	41	46



**1CB**  
**1DB**

**1CB-RNW**  
**1DB-RNW**

METRIC MALE 24° CONE / BSP 60° CONE SEAL

PART NO.		THREAD		D1		DIMENSIONS				
BODY	ASSEMBLY	E	F	TUBE O.D.	B	l1	L1	L	S1	S2
1DB-36-12Z	1DB-36-12RNWZ	M36X2	G3/4"X14	25	18.5	19	43	50.5	41	46
1DB-36-16Z	1DB-36-16RNWZ	M36X2	G1"X11	25	20.5	20	44	52.5	41	46
1DB-42-20Z	1DB-42-20RNWZ	M42X2	G1.1/4"X11	30	20.5	21.5	48	54.5	50	50
1DB-52-24Z	1DB-52-24RNWZ	M52X2	G1.1/2"X11	38	23	23	54	62	55	60

1. Material options for connector body and nut.

Connector body and nut material	Part. No. suffix	Part No. example
Carbon steel (Default)	Z	1CB-16-04Z
304 stainless steel	SR	1CB-16-04SR
316L stainless steel	SV	1CB-16-04SV
316Ti stainless steel	SY	1CB-16-04SY

2. Plating options and performance for carbon steel connectors.

Plating method	Part. No. suffix	Part No. example	White rust (Hours)	Red rust (Hours)
Cr3+ plating (Default)	Z	1CB-16-04Z	96	360
Durakote plating	ZD	1CB-16-04ZD	360	720
Zinc-nickel plating	ZN	1CB-16-04ZN	1000	-