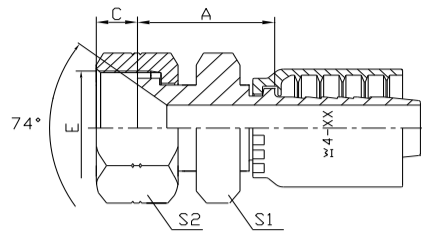


26711DY



26712DY

JIC FEMALE 74° CONE SEAT DOUBLE HEXAGON

REF. ISO 12151-5 / SAE J516

PART NO.		THREAD E	HOSE SIZE		DIMENSIONS				
BRAIDED	SPIRAL		DN	DASH	A	C	S1	S2	
NIPPLE AND NUT ARE SAME HEX SIZE									
26711DY-04-04Z *	-	7/16"X20	6	04	20	9	14	14	
26711DY-05-05Z *	-	1/2"X20	8	05	22	9.5	17	17	
26711DY-06-04Z	-	9/16"X18	6	04	21	10	19	19	
26711DY-06-05Z	-	9/16"X18	8	05	21	10	19	19	
26711DY-06-06Z *	26712DY-06-06Z	9/16"X18	10	06	21	10	19	19	
26711DY-08-06Z *	26712DY-08-06Z	3/4"X16	10	06	25	11	24	24	
26711DY-08-08Z *	26712DY-08-08Z	3/4"X16	12	08	24.5	11	24	24	
26711DY-10-08Z *	26712DY-10-08Z	7/8"X14	12	08	26	13	27	27	
26711DY-10-10Z *	26712DY-10-10Z	7/8"X14	16	10	27	13	27	27	
26711DY-12-10Z	26712DY-12-10Z	1.1/16"X12	16	10	31	15	32	32	
26711DY-12-12Z *	26712DY-12-12Z *	1.1/16"X12	20	12	31.5	15	32	32	
26711DY-16-12Z	26712DY-16-12Z	1.5/16"X12	20	12	33.5	15.2	41	41	
26711DY-16-16Z *	26712DY-16-16Z *	1.5/16"X12	25	16	34.5	15.2	41	41	

1. Part no. marked with "*" is recommended.

2. The recommended match hoses for 1 piece braided fittings are : FC687/EC115-16 and smaller sizes; GH663/EC881-20 and smaller sizes; FC686/EC210/EC215/GH781-24 and smaller sizes; EC110/GH793 whole sizes etc. and with non-skive crimping. For 1 piece spiral fittings are: 2755/GH493/EC640/GH425-16 and smaller sizes; GH506/EC512-12 and larger sizes with skive crimping.

3. Material options for fitting.

Fitting material	Part. No. suffix	Part No. example
Carbon steel (Default)	Z	26711DY-08-08Z
304 stainless steel	SR	26711DY-08-08SR
316L stainless steel	SV	26711DY-08-08SV
316Ti stainless steel	SY	26711DY-08-08SY

4. Plating options and performance for carbon steel fittings.

Plating method	Part. No. suffix	Part No. example	White rust (Hours)	Red rust (Hours)
Cr3+ plating (Default)	Z	26711DY-08-08Z	96	360
Durakote plating	ZD	26711DY-08-08ZD	360	720
Zinc-nickel plating	ZN	26711DY-08-08ZN	1000	-