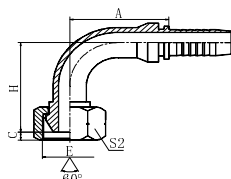
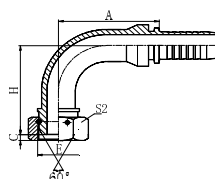


22691-OR
22692-OR



22691-ORT
22692-ORT



22691-ORW
22692-ORW

90° BSP FEMALE 60° CONE

REF. ISO 12151-6

PART NO.		THREAD E	HOSE SIZE		O-RING	DIMENSIONS			
BRAIDED	SPIRAL		DN	DASH		A	C	H	S2
22691-04-03ORZ	-	G1/4"X19	5	03	O06.1X1.0	26.5	5.5	28	19
22691-04-04ORZ *	-	G1/4"X19	6	04	O06.1X1.0	30	5.5	28	19
22691-04-05ORZ	-	G1/4"X19	8	05	O06.1X1.0	30	5.5	31.5	19
22691-04-06ORZ	-	G1/4"X19	10	06	O06.1X1.0	30	5.5	28	19
22691-06-04ORTZ	-	G3/8"X19	6	04	O08.1X1.6	30	6.3	31	22
22691-06-05ORZ	-	G3/8"X19	8	05	O08.1X1.6	33	6.3	34	22
22691-06-06ORZ *	22692-06-06ORZ	G3/8"X19	10	06	O08.1X1.6	35.3	6.3	34	22
22691-06-08ORZ	22692-06-08ORZ	G3/8"X19	12	08	O08.1X1.6	43.8	6.3	42	22
22691-08-06ORTZ	22692-08-06ORTZ	G1/2"X14	10	06	O12.1X1.6	35.3	7.5	35	27
22691-08-08ORZ *	22692-08-08ORZ	G1/2"X14	12	08	O12.1X1.6	41	7.5	41	27
22691-08-10ORZ	22692-08-10ORZ	G1/2"X14	16	10	O12.1X1.6	41.5	7.5	51	27
22691-10-08ORZ	22692-10-08ORZ	G5/8"X14	12	08	O13.1X1.6	41	9.5	45	30
22691-10-10ORZ	22692-10-10ORZ	G5/8"X14	16	10	O13.1X1.6	56	9.5	51	30
22691-10-12ORZ	22692-10-12ORZ	G5/8"X14	20	12	O13.1X1.6	61	9.5	58	30
22691-12-08ORZ	22692-12-08ORZ	G3/4"X14	12	08	O17.1X1.6	41	10.9	47	32
22691-12-10ORZ	22692-12-10ORZ	G3/4"X14	16	10	O17.1X1.6	56	10.9	56.6	32
22691-12-12ORZ *	22692-12-12ORZ *	G3/4"X14	20	12	O17.1X1.6	64.9	10.9	58	32
22691-12-16ORZ	22692-12-16ORZ	G3/4"X14	25	16	O17.1X1.6	74.3	10.9	71	32
22691-16-12ORZ	22692-16-12ORZ	G1"X11	20	12	O22.1X1.6	65.5	11.7	62	41
22691-16-16ORZ *	22692-16-16ORZ *	G1"X11	25	16	O22.1X1.6	76.7	11.7	70	41
22691-20-16ORTZ	22692-20-16ORTZ	G1.1/4"X11	25	16	O29.1X1.6	76.7	10.1	76	50
22691-20-20ORWZ	22692N-20-20ORWZ	G1.1/4"X11	32	20	O29.1X1.6	91.5/94.1	10.1	85	50
22691-24-20ORWZ	22692N-24-20ORWZ	G1.1/2"X11	32	20	O35.1X1.6	91.5/94.1	12.5	92	55
22691-24-24ORWZ	22692N-24-24ORWZ	G1.1/2"X11	40	24	O35.1X1.6	109.4/112.4	12.5	100	55
22691-32-24ORWZ	22692N-32-24ORWZ	G2"X11	40	24	O47.37X1.78	109.4/112.4	16.1	110	70
22691-32-32ORWZ	22692N-32-32ORWZ	G2"X11	50	32	O47.37X1.78	131.8/136.2	16.1	123.3	70

1. The dimension A before "/" is for braided hose fitting and after "/" is for spiral hose fitting.
2. Part no. marked with "*" is recommended.
3. Material options for fitting and the O-ring.

Fitting material	O-ring material	Part. No. suffix	Part No. example
Carbon steel (Default)	NBR	Z/TZ/WZ	22691-08-08ORZ
304 stainless steel	Viton	SR/SRT/SRW	22691-08-08ORSR
316L stainless steel	Viton	SV/SVT/SVW	22691-08-08ORSV
316Ti stainless steel	Viton	SY/SYT/SYW	22691-08-08ORSY

4. Plating options and performance for carbon steel fittings.

Plating method	Part. No. suffix	Part No. example	White rust (Hours)	Red rust (Hours)
Cr3+ plating (Default)	Z	22691-08-08ORZ	96	360
Durakote plating	ZD	22691-08-08ORZD	360	720
Zinc-nickel plating	ZN	22691-08-08ORZN	1000	-