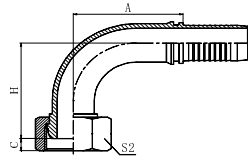
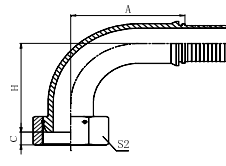


22191
22192



22191-T
22192-T



22191-W
22192-W

90° BSP FEMALE MULTISEAL

PART NO.		E THREAD E	HOSE SIZE		DIMENSIONS			
BRAIDED	SPIRAL		DN	DASH	A	C	H	S2
22191-02-04Z	-	G1/8"X28	6	04	30	2	38	14
22191-04-03Z	-	G1/4"X19	5	03	27	4	35	19
22191-04-04Z *	-	G1/4"X19	6	04	30	4	38	19
22191-04-05Z	-	G1/4"X19	8	05	33	4	41.5	19
22191-06-05Z	-	G3/8"X19	8	05	33	5	42	22
22191-06-06Z *	22192-06-06Z	G3/8"X19	10	06	35.3	5	44.3	22
22191-06-08Z	22192-06-08Z	G3/8"X19	12	08	41	5	50	22
22191-08-06TZ	22192-08-06TZ	G1/2"X14	10	06	35.3	6	44.3	27
22191-08-08Z *	22192-08-08Z	G1/2"X14	12	08	41	6	52.5	27
22191-10-10Z	22192-10-10Z	G5/8"X14	16	10	56	8	57.5	30
22191-10-12Z	22192-10-12Z	G5/8"X14	20	12	65.5	8	67	30
22191-12-08TZ	22192-12-08TZ	G3/4"X14	12	08	41	9.5	52	32
22191-12-10Z	22192-12-10Z	G3/4"X14	16	10	56	9	58.5	32
22191-12-12Z *	22192-12-12Z	G3/4"X14	20	12	64.9	9	68	32
22191-16-12TZ	22192-16-12TZ	G1"X11	20	12	65.5	11	65	41
22191-16-16Z	22192-16-16Z	G1"X11	25	16	77.5	10.5	73.5	41
22191-20-16TZ	22192-20-16TZ	G1.1/4"X11	25	16	76.7	9.1	72	50
22191-20-20WZ	22192N-20-20WZ	G1.1/4"X11	32	20	91.5/94.1	9.1	85	50
22191-24-24WZ	22192N-24-24WZ	G1.1/2"X11	40	24	109.4/112.4	11.5	108	55
22191-32-32WZ	22192N-32-32WZ	G2"X11	50	32	131/135.4	15.3	128.3	70

1. The dimension A before "/" is for braided hose fitting and after "/" is for spiral hose fitting.
2. Part no. marked with "*" is recommended.
3. Material options for fitting.

Fitting material	Part. No. suffix	Part No. example
Carbon steel (Default)	Z/TZ/WZ	22191-08-08Z
304 stainless steel	SR/SRT/SRW	22191-08-08SR
316L stainless steel	SV/SVT/SVW	22191-08-08SV
316Ti stainless steel	SY/SYT/SYW	22191-08-08SY

4. Plating options and performance for carbon steel fittings.

Plating method	Part. No. suffix	Part No. example	White rust (Hours)	Red rust (Hours)
Cr3+ plating (Default)	Z	22191-08-08Z	96	360
Durakote plating	ZD	22191-08-08ZD	360	720
Zinc-nickel plating	ZN	22191-08-08ZN	1000	-