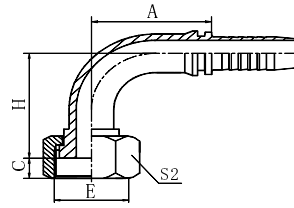


20291
20292



20291-T
20292-T

90° GB METRIC FEMALE FLAT SEAT

REF. GB/T 9065.1

PART NO.		THREAD E	HOSE SIZE		DIMENSIONS			
BRAIDED	SPIRAL		DN	DASH	A	C	H	S2
20291-12-02Z	-	M12X1.25	4	02	26.5	8	30.5	17
20291-12-04Z	-	M12X1.25	6	04	30	8	33.5	17
20291-14-04Z *	-	M14X1.5	6	04	30	8.5	34	19
20291-14-05Z	-	M14X1.5	8	05	33	8.5	37	19
20291-16-04Z	-	M16X1.5	6	04	30	8	35	22
20291-16-05Z *	-	M16X1.5	8	05	33	8	38	22
20291-16-06Z	20292-16-06Z	M16X1.5	10	06	35.3	8	40.3	22
20291-18-05TZ	-	M18X1.5	8	05	33	8	37	22
20291-18-06Z *	20292-18-06Z	M18X1.5	10	06	35.25	8	41.3	24
20291-22-08Z *	20292-22-08Z	M22X1.5	12	08	41	10	48	27
20291-22-10Z	20292-22-10Z	M22X1.5	16	10	56	10	53	27
20291-24-08TZ	20292-24-08TZ	M24X1.5	12	08	41	11	45.5	30
20291-27-04TZ	-	M27X1.5	6	04	30	10	35.5	32
20291-27-08TZ	20292-27-08TZ	M27X1.5	12	08	41	10	46	32
20291-27-10TZ *	20292-27-10TZ	M27X1.5	16	10	56	10	51	32
20291-30-12Z *	20292-30-12Z *	M30X1.5	20	12	65.5	11	63.5	36
20291-36-16Z	20292-36-16Z	M36X2	25	16	76.7	13	70	41
20291-39-16TZ *	20292-39-16TZ *	M39X2	25	16	76.7	13	67.5	46
20291-42-20WZ	20292N-42-20WZ	M42X2	32	20	91.5/94.1	15	80.5	50
20291-45-20TZ	20292N-45-20TZ	M45X2	32	20	91.5/94.1	15	78.5	55
20291-52-20TZ	20292N-52-20TZ	M52X2	32	20	91.5/94.1	17	78.5	60
20291-52-24TZ	20292N-52-24TZ	M52X2	40	24	109.4/112.4	17	92	60
20291-64-32TZ	20292N-64-32TZ	M64X2	50	32	131/135.4	23	113.3	75

1. The dimension A before "/" is for braided hose fitting and after "/" is for spiral hose fitting.
2. Part no. marked with "*" is recommended.
3. Material options for fitting.

Fitting material	Part. No. suffix	Part No. example
Carbon steel (Default)	Z/TZ	20291-22-08Z
304 stainless steel	SR/SRT	20291-22-08SR
316L stainless steel	SV/SVT	20291-22-08SV
316Ti stainless steel	SY/SYT	20291-22-08SY

4. Plating options and performance for carbon steel fittings.

Plating method	Part. No. suffix	Part No. example	White rust (Hours)	Red rust (Hours)
Cr3+ plating (Default)	Z	20291-22-08Z	96	360
Durakote plating	ZD	20291-22-08ZD	360	720
Zinc-nickel plating	ZN	20291-22-08ZN	1000	-